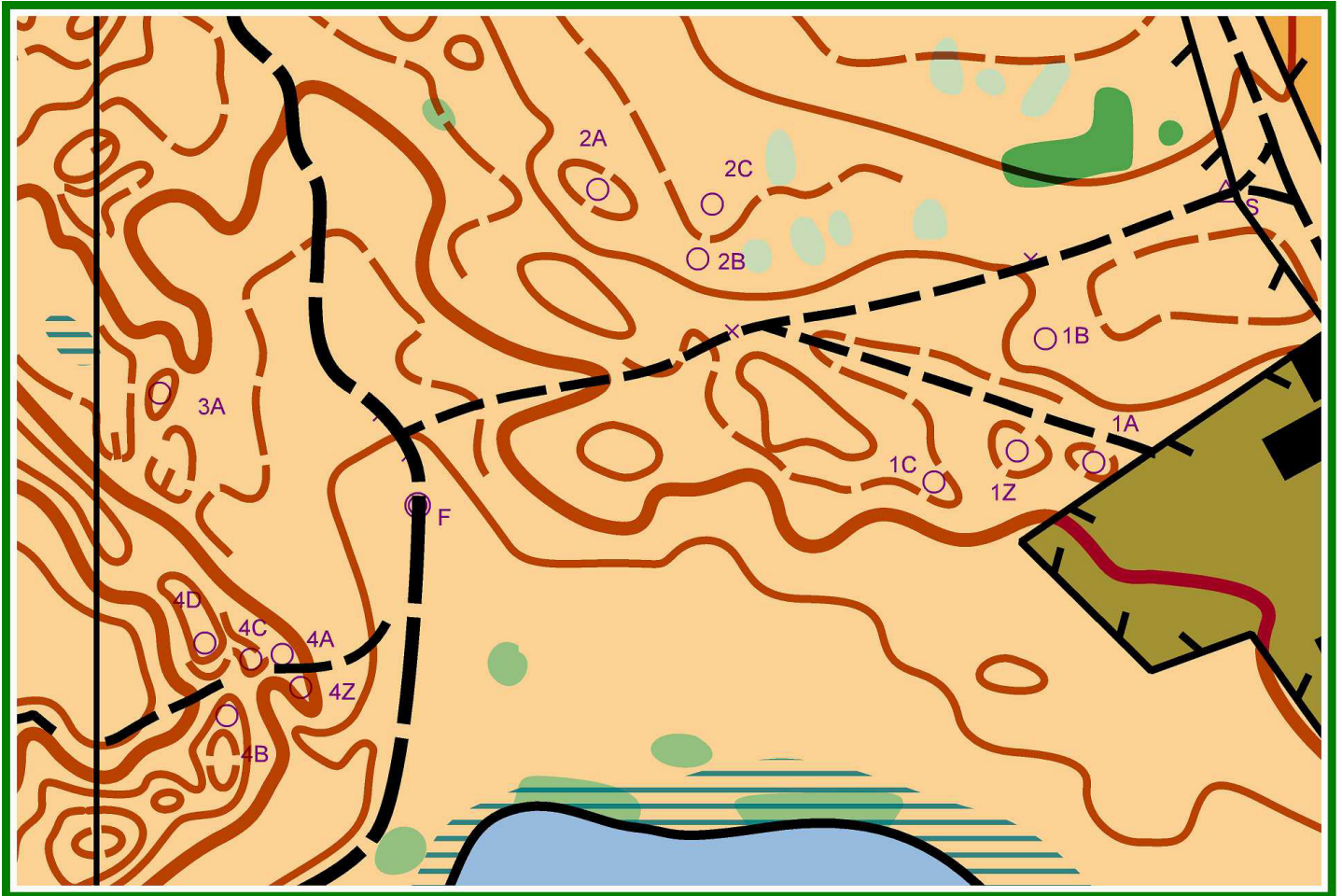


FORVIE PRE-O	19-Oct-14					
Name	Club	S/J	1 (Z)	2 (C)	3 (A)	4 (Z)
Ackland, Jane	INT	S	A	C	A	C
Allik, Mirjam	CLYDE	S	Z	C	Z	A
Blackburn, Karen	BL	S	C	B	Z	A
Blumenstein,Bojan	GER	S	C	C	A	D
Bryant, Bruce	OD	S	Z	C	A	Z
Carmichael, Dick	Tinto	S	A,Z	C	A	A,Z
Carmichael, Trish	Tinto	S	A	B	A	A
Charles, Kate	WCOG	S	A	A,B	A	C
Collins, Nick	MAROC	S	A	C	A	Z
Coombs, Trish	MAROC	S	A	B	Z	A
Frame, Davie	TAY	S	A	C	A	A
Galloway, Robin	INT	S	B	C	Z	B
Gillies, Elaine	TAY	S	B	C	A	A
Halliday, Alan	MOR	S	A	C	A	B
Halliday, Jane	MOR	S	B	B	A	A
Hendrie family	FVO	S/J	A,Z	C	A	Z
Hughes, Ian	WCH	S	A	B	Z	C
Hughes, Judith	WCH	S	A	B	Z	D
Lardet, Eloise	FVO	J	A	C	Z	B
Lardet, Pascal	FVO	S	A	B	A	Z
Lardet, Patrick	FVO	J	A	C	Z	B
Leonard, Jen	FVO	S	A	A,C	A	Z
Lessells, Alastair	ESOC	S	A	C	A	Z
Lessells, Katy	ESOC	S	A	C	A	Z
Maxwell, Ian	RR	S	C	A	A	A
McAdam, Pauline	RR	S	A,B	A	A	A
Miguel, Merce	UPC-O Catalunya	S	B	C	Z	A
Morrison, Jim	ESOC	S	A	B	Z	Z
Murgatroyd, Paul	LOG	S	A	B	A	C
Paterson, Andy	CLYDE	S	Z	C	A	Z
Richter, Friedmar	GER	S	A	B	A	A
Rowland, Ian	ELO	S	B	B	A	C
Sands, Tim	BASOC	S	A	A	Z	D
Scrutton, Roger	ESOC	S	A	C	A	Z
Smirthwaite, Steve	MOR	S	C	C	A	A
Smith, Fergus	AYROC	J	Z	C	A	B
Smith, Phil	AYROC	S	Z	C	A	C
Smithard, Mike	DEE	S				
Smithard, Phil	KFO	S	Z	C	A	Z
Stewart, Mike	ESOC	S				
Termens, Assumpcio	UPC-O Catalunya	S	B	C	Z	A
Tough, Graham	SWOC	S	C	B	Z	A
Wilson, Martin	BKO	S	A	A	Z	Z
Wilson, Rachel	CLYDE	S	Z	B	A	D
% correct			17	55	67	29

FORVIE PRE-O
19 October 2014

All controls map - 1:1000



Control 1 - Z: From the viewing point this was tricky, as the boundary of the garden area was not easily visible. However it became a straightforward problem if viewed from the track junction to the west of the viewing point.

Control 2 - C: The form line hill where A was positioned was clearly identifiable. The correct kite C was at the same contour level as A, with B being set too low (below the form line).

Control 3 - A: There was only one hill visible from the viewing point, and clearly set behind the spur coming in from the north.

Control 4 - Z: B,C and D were clearly too high. So it came down to trying to identify the position of the path relative to kite A. The position of the re-entrant behind the spur should have shown that A was to the north of the path, and therefore the correct answer was Z.

Congratulations to Andy, Phil and Bruce on 4 correct answers. We hope to offer more PreO at SOLs in 2015.